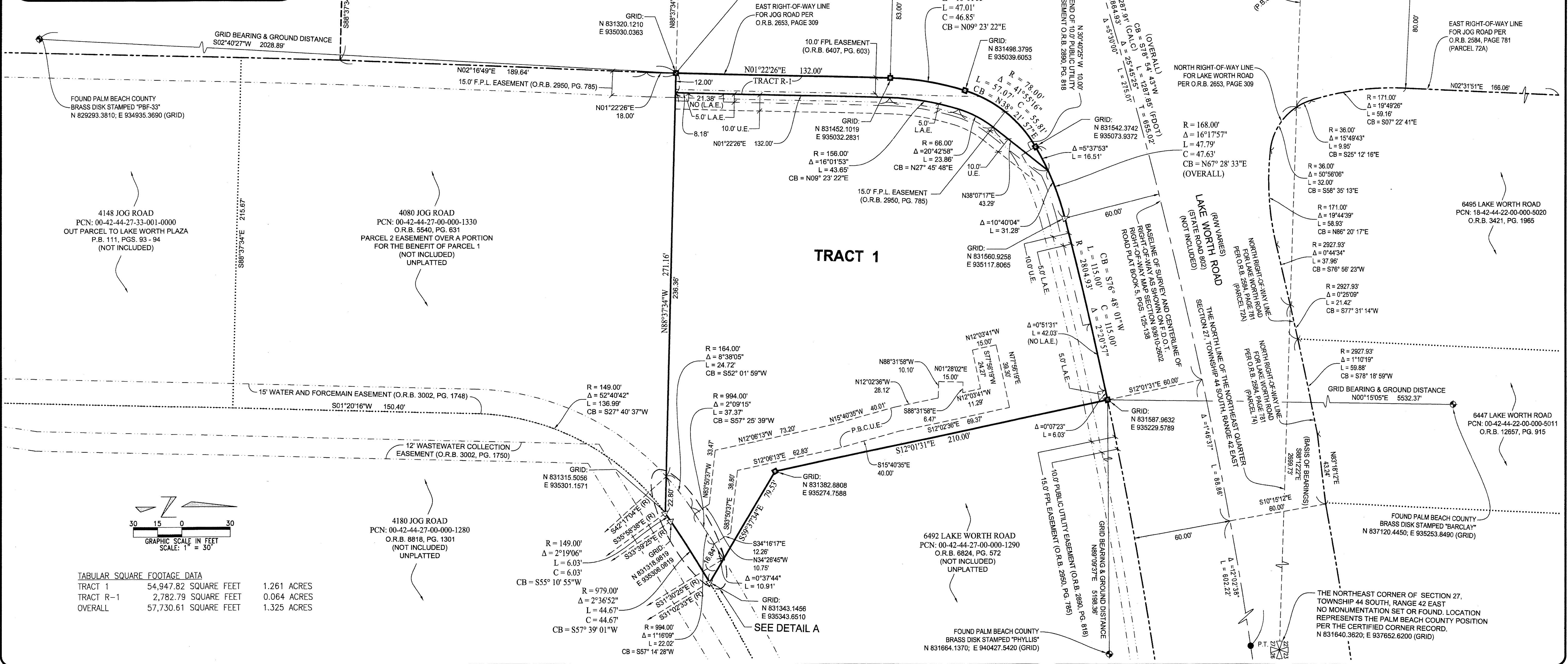
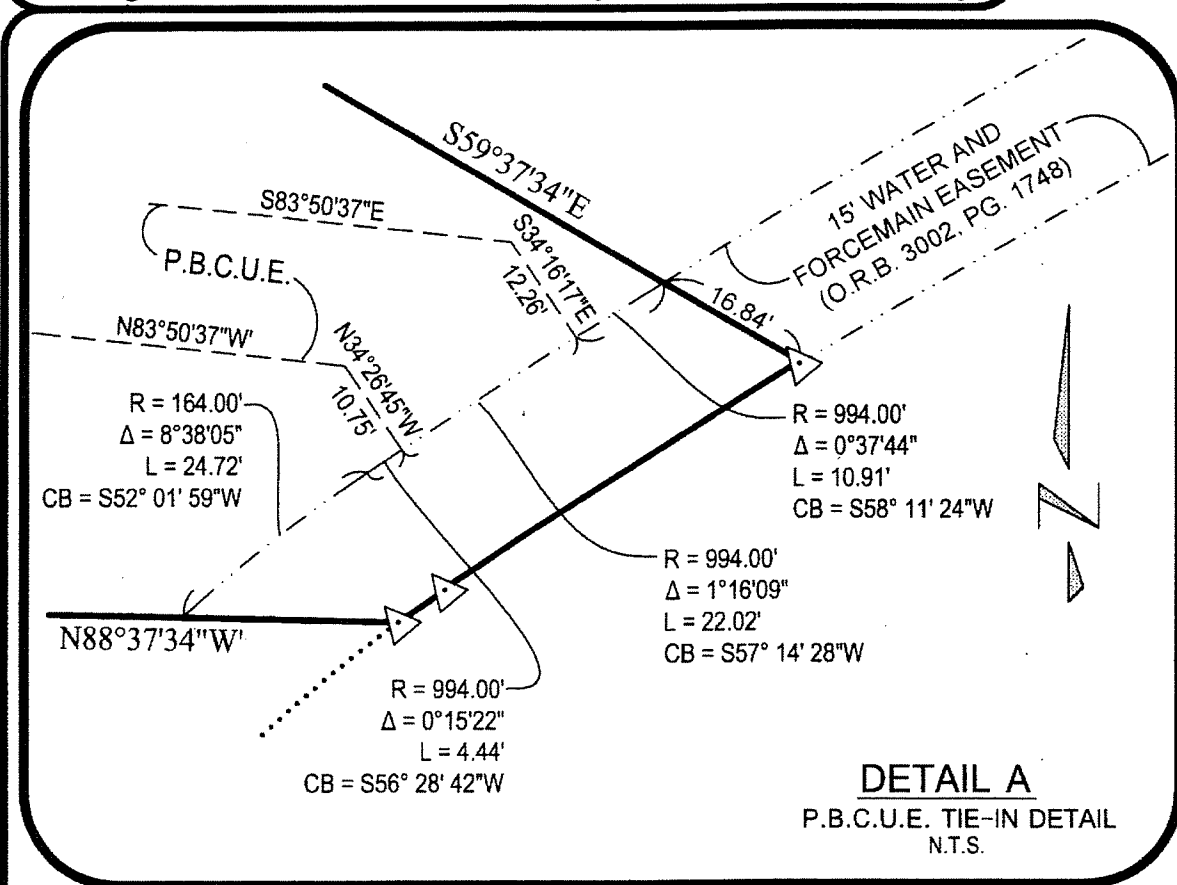
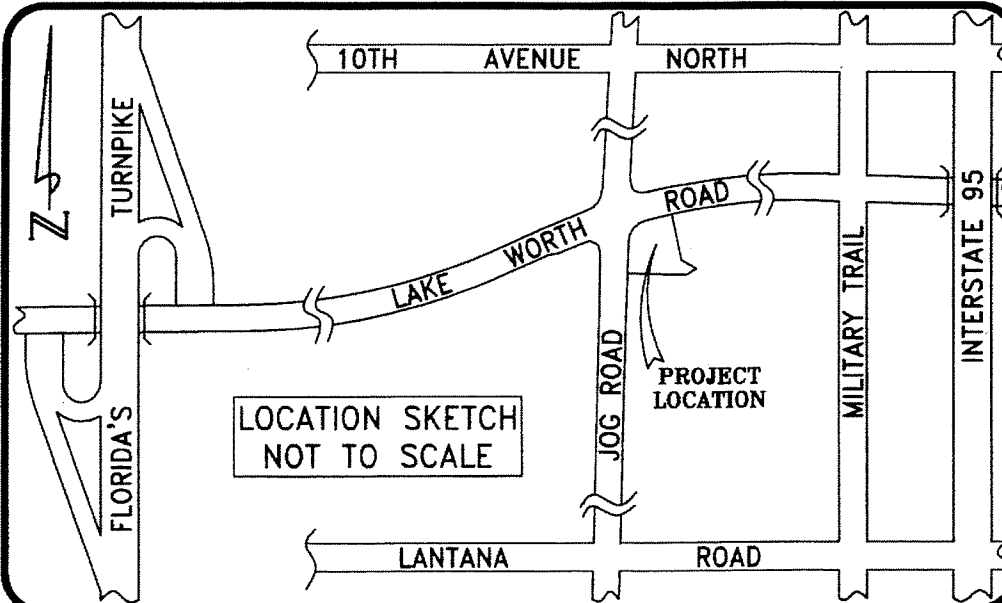


# WALGREENS AT LAKE WORTH PLAZA WEST

BEING A PART OF AN M.U.P.D., ALSO BEING A PLAT OF A PORTION OF THE NORTHWEST QUARTER (NW 1/4) OF THE NORTHEAST QUARTER (NE 1/4) OF SECTION 27, TOWNSHIP 44 SOUTH, RANGE 42 EAST, PALM BEACH COUNTY, FLORIDA  
SHEET 2 OF 2

STATE OF FLORIDA  
COUNTY OF PALM BEACH  
THIS PLAT WAS FILED  
FOR RECORD AT \_\_\_\_\_ M.  
THIS DAY OF \_\_\_\_\_, 201\_\_\_\_  
AND DULY RECORDED IN PLAT  
NO. \_\_\_\_\_ ON PAGES \_\_\_\_\_  
THRU \_\_\_\_\_  
  
SHARON R. BOCK  
CLERK AND COMPTROLLER  
  
BY \_\_\_\_\_ D.C.



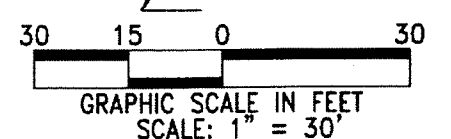
FOUND PALM BEACH COUNTY BRASS DISK STAMPED "PBF-33" N 829293.3810, E 934935.3690 (GRID)

4148 JOG ROAD PCN: 00-42-44-27-33-001-0000 OUT PARCEL TO LAKE WORTH PLAZA P.B. 111, PGS. 93 - 94 (NOT INCLUDED)

4080 JOG ROAD PCN: 00-42-44-27-00-000-1330 O.R.B. 5540, PG. 631 PARCEL 2 EASEMENT OVER A PORTION FOR THE BENEFIT OF PARCEL 1 (NOT INCLUDED) UNPLATTED

6492 LAKE WORTH ROAD PCN: 00-42-44-27-00-000-1290 O.R.B. 6824, PG. 572 (NOT INCLUDED) UNPLATTED

6447 LAKE WORTH ROAD PCN: 00-42-44-22-00-000-5011 O.R.B. 12657, PG. 915



TABULAR SQUARE FOOTAGE DATA		
TRACT 1	54,947.82 SQUARE FEET	1.261 ACRES
TRACT R-1	2,782.79 SQUARE FEET	0.064 ACRES
OVERALL	57,730.61 SQUARE FEET	1.325 ACRES

### LEGEND OF SYMBOLS:

- 4"x4" CONCRETE MONUMENT STAMPED "P.R.M. LB4897" OR AS NOTED.
- MAG NAIL & DISK STAMPED "P.R.M. LB 4897" OR AS NOTED.

### PROPERTY CONTROL ABBREVIATIONS

- P.C.P. = PERMANENT CONTROL POINT
- P.R.M. = PERMANENT REFERENCE MONUMENT
- CONC. = CONCRETE
- MON. = MONUMENT
- M.N.D. = MAG NAIL & DISK

### LEGEND OF ABBREVIATIONS:

- = DEGREES
- = MINUTES
- = SECONDS
- R = RADIUS
- Δ = DELTA
- L = ARC LENGTH
- CB = CHORD BEARING
- P.C. = POINT OF CURVATURE
- P.T. = POINT OF TANGENCY
- P.R.C. = POINT OF REVERSE CURVE
- RAD. = RADIAL
- D.B. = DEED BOOK
- N.R. = NON-RADIAL
- T = TANGENT
- N.T. = NON-TANGENT
- C/L = CENTERLINE
- P.B. = PLAT BOOK
- D.B. = DEED BOOK
- O.R.B. = OFFICIAL RECORD BOOK
- P.G. = PAGE
- P.O.C. = POINT OF COMMENCEMENT
- P.O.B. = POINT OF BEGINNING
- P.O.T. = POINT OF TERMINUS
- L.B. = LICENSED BUSINESS
- P.S.M. = PROFESSIONAL SURVEYOR & MAPPER

### EASEMENT / MISCELLANEOUS ABBREVIATIONS

- L.A.E. = LIMITED ACCESS EASEMENT
- L.B.E. = LANDSCAPE BUFFER EASEMENT
- L.M.E. = LAKE MAINTENANCE EASEMENT
- S.L.E. = SANITARY SEWER LINE EASEMENT
- W.L.E. = WATER LINE EASEMENT
- P.B.C.U.E. = PALM BEACH COUNTY UTILITY EASEMENT
- D.E. = DRAINAGE EASEMENT
- U.E. = UTILITY EASEMENT

**KESHAVARZ & ASSOCIATES**  
Civil Engineers & Land Surveyors  
711 North Dixie Highway, Suite 201  
West Palm Beach, Florida 33401  
Tel: (561) 689-8000 Fax: (561) 689-7176

THIS INSTRUMENT WAS PREPARED BY SCOTT F. BRYSON, IN AND FOR THE OFFICES OF KESHAVARZ & ASSOCIATES, INC., LB4897, 711 NORTH DIXIE HIGHWAY SUITE 201, WEST PALM BEACH, FLORIDA 33401 TELEPHONE (561) 689-8000.

DATE: 09/24/12	CHECKED: S.F.B.	PROJECT No.	SHEET No.
SCALE: 1" = 30'	APPROVED: S.F.B.	11-966	2 OF 2
DRAWN: R.A.B.	DWG No: D11-966P		

2:20:11-11-11-966 Walgreens.dwg 11-966\_KA Walgreens Plat.dwg Friday, August 16, 2013 9:03:32 AM